



**CROWLEY ISD GRADUATION  
REQUIREMENTS FOR CLASS OF  
2018 AND BEYOND**



# WHAT WILL WE RECEIVE DURING COURSE ADVISEMENT?

- Transcript of grades (if applicable)
- Endorsement / PGP indication
- Instructions on building a 4 year plan in Naviance
- Link to the Course Description Guide
  - Found on the Crowley ISD website you can also open the below link.
    - [http://www.crowleyisdtx.org/cms/lib5/TX01917780/Centricity/Domain/647/2015-2016%20HS%20Course%20Description%20Guide\\_Final.pdf](http://www.crowleyisdtx.org/cms/lib5/TX01917780/Centricity/Domain/647/2015-2016%20HS%20Course%20Description%20Guide_Final.pdf)



# WHAT IS HOUSE BILL 5 AND THE FOUNDATION GRADUATION PROGRAM?

- Check out these videos developed by the University of Texas and the Texas Education Agency
  - [Parent Video](#)
  - [Student Video](#)



## Foundation with Endorsement

### Requires 26 Credits:

- 4 English
- 4 Math
- 4 Science
- 3 Social Studies
- 1 Fine Art
- 1 PE
- 2 Foreign Language
- 6 electives (some with emphasis in a specific endorsement area)

## Distinguished Level of

### Achievement:

- Same credit counts as Foundation with Endorsement
- Must take Algebra 2 as part of math requirements

Foundation only (Without endorsement) requires one less math, one less science, and only 4 electives for a total of 22 credits.



## Distinguished Level of Achievement

26 Credits • Algebra II Required • Eligible for Top 10% Automatic Admissions to Texas Public Universities

22 Credits for the Foundation High School Program

### Requirements of 1 Endorsement

(including 4<sup>th</sup> credit of Math and Science and 2 additional electives)



Be sure to visit your school counselor to learn more about your options.  
Students may earn more than one endorsement.



**BUT, FIRST... YOU'VE GOT TO GET YOUR  
CORE CLASSES!**



# ENGLISH

- English 1 (\*)
- English 2 (\*)
- English 3 (\*\*) (D)
- English 4 (\*\*) (D) (other Language Arts courses can substitute for English 4 in most cases – Refer to the Course Description Guide for more options)

**(\*) Pre-AP option available**

**(\*\*) Advanced Placement option available**

**(D) Dual Credit options available**



# MATHEMATICS OPTIONS

- Algebra 1 (\*)
- Geometry (\*)
- Math Models (MMA)
- Algebra 2 (\*)
- Advanced Quantitative Reasoning (“AQR”)
- Pre-AP PreCalculus
- AP Statistics
- Calculus
- AP Calculus AB
- AP Calculus BC

**Underlined courses are required credits.**

**(\*) Indicates Pre-AP is available for that course**

*Refer also to the Course Description Guide for more information about Mathematics course options*





# SCIENCE

- Biology (\*)
- Chemistry(\*), Physics(\*\*), or IPC
- Two more Science credits. Options include:

Environmental Systems, Anatomy & Physiology, AP Environmental Science, AP Biology, AP Chemistry, AP Physics 1, 2, and C, Microbiology/Pathophysiology, Aquatic Science, Earth and Space Science, Forensic Science (CTE), Advanced Animal Science (CTE), Food Science (CTE)

**(\*) Pre-AP option available**

**(\*\*) Advanced Placement option available**



# SOCIAL STUDIES

- World Geography (\*) or World History (\*)(\*\*)
  - (AP Human Geography may substitute)
- US History (\*\*)(D)
- US Government (1/2 credit) (\*\*)(D)
- Economics (1/2 credit) (\*\*)(D)

**(\*) Pre-AP option available**

**(\*\*) Advanced Placement option available**

**(D) Dual Credit options available**



# FOREIGN LANGUAGE

- Students must complete two credits in the same language.
- We offer:
  - Spanish
  - French
  - German
  - American Sign Language



# PHYSICAL EDUCATION: 1 CREDIT



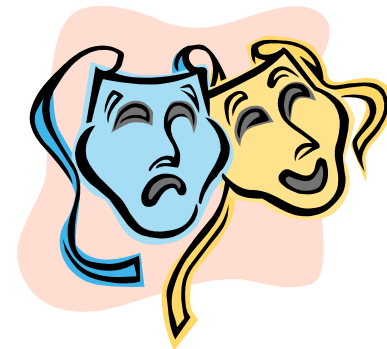
## ○ Can come from:

- Athletics
- PE
- JROTC
- Or the 1<sup>st</sup> semester of the first two years of Band, Color Guard, Cheer, or Drill Team



# FINE ARTS

- One full credit of Fine Art
  - Art
  - Choir
  - Band
  - Theatre
  - Drill Team
  - Dance
  - Principals of Floral Design (CTE)
  - Music Theory



# OTHER MEANS OF CREDIT

- Credit by Exam – Offered for both advancement and recovery. See your counselor for details.
- Dual Credit – Can be done through the school in English and Social Studies starting Junior year, or can be done over the summer.

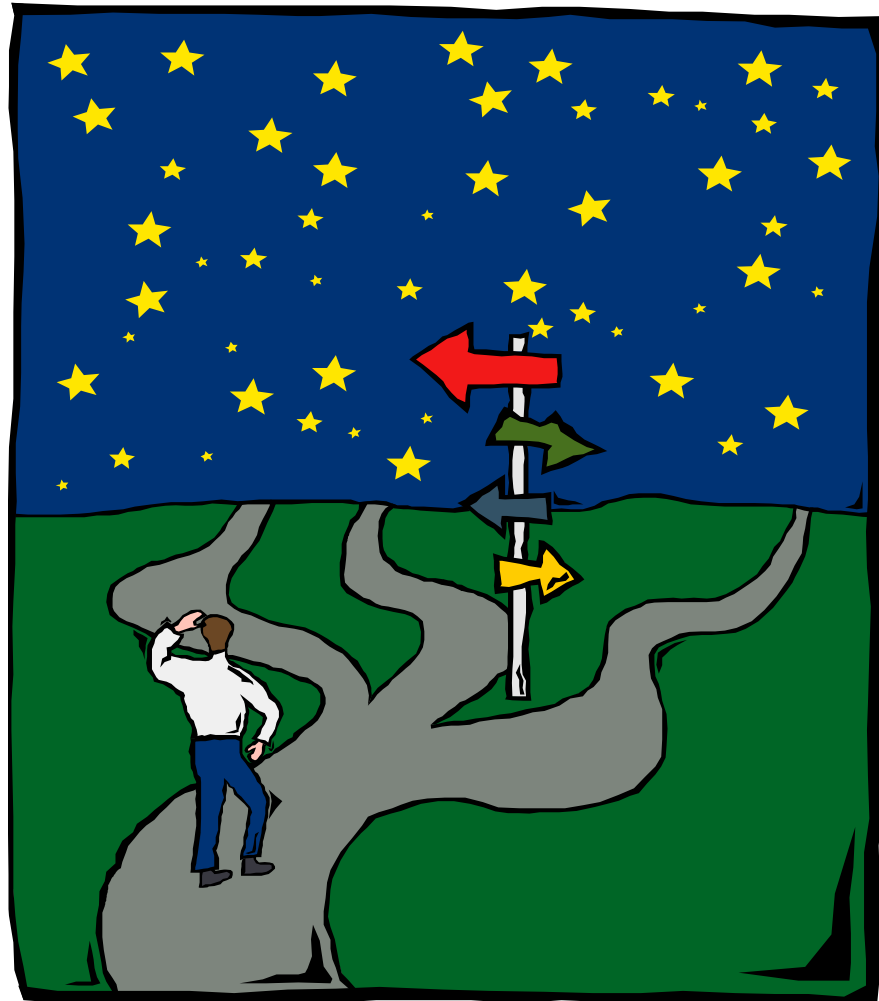


# PERFORMANCE ACKNOWLEDGEMENTS

- For outstanding performance:
  - in a dual credit course
  - in bilingualism and biliteracy
  - on an AP test or IB exam
  - on the PSAT, the ACT-Plan, the SAT, or the ACT
- For earning a nationally or internationally recognized business or industry certification or license



# ENDORSEMENTS: YOUR FUTURE IS YOUR CHOICE





# CROWLEY ISD PATHWAY OFFERINGS

Arts & Humanities	Business & Industry	Business & Industry (Continued)	Public Services
<ul style="list-style-type: none"> <li>☐ Fine Arts</li> <li>☐ Social Studies</li> <li>☐ Languages Other Than English</li> </ul>	<ul style="list-style-type: none"> <li>☐ Ag Power Systems</li> <li>☐ Ag Natural Resources</li> <li>☐ Ag Plant Systems</li> <li>☐ Ag Animal Systems</li> <li>☐ Ag Environmental Systems</li> <li>☐ Interior Design</li> <li>☐ Architecture Design</li> <li>☐ Construction Technology</li> <li>☐ Graphic Design</li> <li>☐ Audio and Video Technology</li> <li>☐ Commercial Photography</li> </ul>	<ul style="list-style-type: none"> <li>☐ Fashion Design</li> <li>☐ Business Information Management</li> <li>☐ Marketing</li> <li>☐ Finance</li> <li>☐ Journalism</li> <li>☐ Debate &amp; Public Speaking</li> <li>☐ Computer Software Design &amp; Programming</li> <li>☐ Web and Digital Communication</li> <li>☐ Culinary Arts</li> <li>☐ Computer Technician &amp; Network Administrator</li> </ul>	<ul style="list-style-type: none"> <li>☐ Education &amp; Training</li> <li>☐ Health Science</li> <li>☐ Health Science – Pharmacy Tech</li> <li>☐ Biomedical Science</li> <li>☐ Cosmetology</li> <li>☐ Government &amp; Public Administration</li> <li>☐ Law Enforcement</li> <li>☐ Firefighter</li> <li>☐ JROTC</li> <li>☐ Child Development</li> </ul>
<p><b>S.T.E.M.</b></p>			
<ul style="list-style-type: none"> <li>☐ Mathematics</li> <li>☐ Science</li> <li>☐ Computer Science</li> <li>☐ Pre-Engineering (Project Lead the Way)</li> </ul>			
<p><b>Multidisciplinary</b></p>			
<ul style="list-style-type: none"> <li>☐ 4x4 Grad Plan</li> <li>☐ Earning 4 advanced (AP or DC) courses</li> <li>☐ 4 electives that center around becoming a college ready student</li> </ul>			



# WHICH COHERENT SEQUENCE DOES THIS FUTURES CLASS LEAD TO?

- **Futures in Arts, AV and Communication**
  - Graphic Design
  - Interior Design
  - Audio and Video Production
  - Fashion Design
  - Commercial Photography
- **Futures in Agriculture and Natural Resources**
  - All Agriculture related programs
- **Futures in STEM**
  - Science, Technology, Engineering and Math careers
- **Futures in Business, Marketing and Finance**
  - Accounting
  - Finance
  - Marketing
  - Business Information Systems
- **Futures in Social, Personal, and Public Service**
  - Cosmetology
  - Education and Training
  - Culinary Arts
- **Futures in Law, Public Safety, Corrections, and Security**
  - Law Enforcement
  - Firefighter
- **Futures in Biomedical and Health Science**
  - Health Science
  - Pharmacy Technician



# NAVIANCE INSTRUCTIONS

Go to:

<https://connection.naviance.com/crowleyhs>

Login is (FirstInitial)(LastInitial)ID

Password is your ID

Example: Bob Williams, ID 12345

Login: BW12345

Password: 12345



Welcome to Family Connection

username

password

remember me

Log In

[forgot your password?](#)

[need additional help?](#)

LOGIN HERE  
Username: FL#####  
Password: #####



# family connection

home

courses

colleges

careers

about me



my planner

English ▾

## my colleges

- colleges I'm thinking about
- colleges I'm applying to

## links

- guidance page
- crowley isd
- fatsa
- act
- sat

## what's new

- Iris Pelton has assigned the task [Complete college search](#) to you
- Bernard Cowan has assigned the task [Edit course plan](#) to you

Get the mobile app!  
Naviance Student

Available on the  
App Store

## Welcome to Family Connection!

Beginning with the 2015-2016 school year, we are happy to introduce our students to enhanced features, by Naviance. **Family Connection** offers innovative, easy-to-use web tools for students and their parents. **Family Connection** will help guide students' academic and career choices, providing them with opportunities of self-exploration.

Using the programs in Family Connection, students will be able to link to useful websites, surveys and many relevant career and college topics.

The Counseling staff is committed to assisting each of you in experiencing a smooth transition to life after high school and achieving your post high school career goals.

Thank you for your support of our school counseling program!

*Remember, the more you put into this system, the more you will benefit from it!!*

CLICK HERE

- You have [no new messages](#)
- [document library](#)
- [contact us](#)





Overview

Goals

To-do List

Tasks Assigned to Me



## [my tasks](#) > Edit course plan

### task information

Status:	not started
Deadline:	none
Requirement:	recommended
Summary:	Create or edit a course plan

⇒ To complete this task, you need to [edit a course plan](#)

### recent updates

No updates.

add comment

raise hand

upload files

CLICK HERE



Looks like you need a plan, my man



home

courses

colleges

careers

about me



my planner

### NOTES AND COMMENTS

No Comments Found.

Write a comment...

## MANAGE YOUR PLANS

You haven't created any course plans yet. Let's get started!

Using the Course Planner, you can choose the type of plan you want to build, pick courses, and find out how well your plan will prepare you for your goals. Build as many plans as you want using four simple steps:

Choose a plan of study

Select your courses

Review & finalize

Scan your plan

Click the button to build your first plan

[+ add a new plan](#)

My Graduation Plan

English: 4 total credit(s) required

GRADE	COURSE	REQUIREMENT	CREDITS PLANNED	CREDITS REQUIRED
9	English 9	English	1 in your plan	1
10	English 10	English	1 in your plan	1
11	English 11	English	1 in your plan	1
12	English 12	English	1 in your plan	1

Math: 3 total credit(s) required

GRADE	COURSE	REQUIREMENT	CREDITS PLANNED	CREDITS REQUIRED
9	Math 9	Math	1 in your plan	1
11	Math 11	Math	1 in your plan	1
12	Math 12	Math	1 in your plan	1


Social Studies: 1 total credit(s) required

GRADE	COURSE	REQUIREMENT	CREDITS PLANNED	CREDITS REQUIRED
11	Social Studies 11	Social Studies	1 in your plan	1



Today, we will start a new plan from scratch!

If you work on it after today, you might choose to edit an already started plan, such as the one we start in class today.

 Click the button to build your first plan!

 [add a new plan](#)

Start a brand new plan from scratch

[Create new draft plan](#)





## WHICH TYPE OF PLAN WOULD YOU LIKE TO BUILD?

### Plans Suggested by Your School:

#### **FHSP Plus Arts & Humanities Endorsement**

26 credits, including 4 English, 4 Math, 4 Science, 3 Social Studies, 2 LOTE, 1 PE, 1 Fine Art and electives that include at least 4 in one of the specified Arts and Humanities areas.

[choose this one](#)



#### **FHSP Plus Business and Industry Endorsement**

26 credits, including 4 English, 4 Math, 4 Science, 3 Social Studies, 2 LOTE, 1 PE, 1 Fine Art and electives that include concentrated courses in a Business and Industry related Program of Study

[choose this one](#)



#### **FHSP Plus Public Services**

26 credits, including 4 English, 4 Math, 4 Science, 3 Social Studies, 2 LOTE, 1 PE, 1 Fine Art and electives that include concentrated courses in Science, Mathematics, Pre-Engineering or Computer Science

[choose this one](#)



#### **FHSP Plus STEM Endorsement**

26 credits, including 4 English, 4 Math, 4 Science, 3 Social Studies, 2 LOTE, 1 PE, 1 Fine Art and electives that include concentrated courses in Science, Mathematics, Pre-Engineering or Computer Science

[choose this one](#)



#### **Minimum Plan COUNSELOR APPROVAL REQUIRED**

*(no description)*

[choose this one](#)



#### **Recommended High School Plan**

This plan applies to the classes of 2016 and 2017 only.

[choose this one](#)



Choose the plan you are going to graduate on. Refer to previous information about which pathway to choose.



Browse each requirement and select courses to complete your plan



notes and comments view course history switch to another plan exit course planner

YOU CAN MAKE A NOTE TO YOUR COUNSELOR

Plan (click to rename)

REQUIREMENTS

Recommended High School Plan

- English
- Mathematics
- Science
- Social Studies
- Language Other Than English
- Physical Education
- Fine Art
- Speech
- Elective Courses

Please select one of the Requirements listed under the Plan of Study on the left to see the courses available.

SUBJECT AREAS TO FILL

CLASSES YOU'VE TAKEN OR ARE TAKING

YOUR DRAFT PLAN

Grade 9

- Algebra 1
- Art 1
- Biology
- English 1
- JROTC 1 PE Substitute
- PE Sem 2
- Professional Communications
- World Geography

Grade 10

GO AHEAD AND CLICK ON ENGLISH



## REQUIREMENTS

Recommended High School Plan

English

Mathematics

Science

Social Studies

Language Other Than English

Physical Education

Fine Art

Speech

Elective

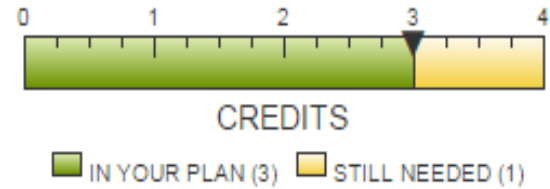
## COURSES

### Your plan at a glance:

Minimum allowed:	In your plan:	You still need:	Completed:
21.00 credit(s)	21.00 credit(s)	5 credit(s)	0 credit(s)

OVERVIEW OF CREDITS CHOSEN

**English**  
Select one level of English from each of English 1, English 2, English 3, and English 4



INSTRUCTIONS ABOUT WHAT TO CHOOSE ON THIS PAGE

Please choose one course to take the following English Courses:

9th grade	1 credit	<a href="#">✗ remove from plan</a>
10th grade	1 credit	<a href="#">✗ remove from plan</a>
11th grade	1 credit	<a href="#">✗ remove from plan</a>

Please choose courses for each grade level shown:

### Grade 9

Choose one of these courses:

- [Eng Speakers Other Languages 1](#) 1 credit(s) IN YOUR PLAN
- [English 1](#) 1 credit(s)

SCROLL DOWN.....



THIS MEANS IT IS  
ALREADY IN YOUR PLAN.  
YOU DON'T HAVE TO  
SELECT IT AGAIN.

Choose one of these courses:

1 credit(s)

- [English 1](#)
- [English 2 Pre-AP](#)

→ IN YOUR PLAN

### Grade 11

Choose one of these courses:

- [English 3](#) 1 credit(s)
- [English 3 AP](#) 1 credit(s)
- [English 3 Dual Cred  
Comp 1 & 2](#) 1 credit(s)

→ IN YOUR PLAN

### Grade 12

Choose one of these courses:

- [English 4](#) 1 credit(s)
- [English 4 Advanced  
Placement](#) 1 credit(s)
- [English 4 DC Amer  
British Lit](#) 1 credit(s)

CHOOSE COURSES  
TO MEET THE  
REQUIREMENTS

CLICK HERE TO ADD  
THEM TO YOUR  
PLAN!

Add selected courses to your draft plan



## REQUIREMENTS

Recommended High School Plan

- English
- Mathematics
- Science
- Social Studies
- Language Other Than English
- Physical Education
- Fine Art

## COURSES

**Your plan at a glance:**

Min. required:	Max. allowed:	In your plan:	You still need:	Completed:
12.00 credit(s)	22.00 credit(s)	22.00 credit(s)	4 credit(s)	0 credit(s)

**ONCE YOU'VE MET THE REQUIREMENTS FOR THAT SUBJECT AREA, THE RED TRIANGLE CHANGES TO A GREEN CHECKMARK!**

You are planning to take the following English Courses:

English 1	9th grade	1 credit	<a href="#">remove from plan</a>
English 2	10th grade	1 credit	<a href="#">remove from plan</a>

**THEN, YOU KEEP GOING THROUGH THE SUBJECTS UNTIL ALL REQUIREMENTS ARE MET**



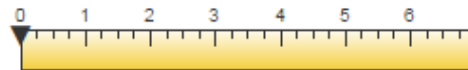
Be careful and read the instructions!  
Things can sometimes be a little tricky  
in the electives department.

**Your plan at a glance:**

<b>Min. required:</b>	<b>Max. allowed:</b>	<b>In your plan:</b>	<b>You still need:</b>	<b>Completed:</b>
26.00 credit(s)	0.00 credit(s)	4.00 credit(s)	22 credit(s)	0 credit(s)

**Endorsement Electives**

First, select an endorsement pathway, paying attention to requirements listed. Then, you may choose additional electives totaling at least 7.



Please choose 7.00 credits from any mix of courses available

- Endorsement Electives sub-groups
- JROTC
- Additional Electives
  - Education and Training Pathway
  - Health Science-Patient Care Technician
  - Health Science - Pharmacy Technician Pathway
  - Biomedical Science
  - Cosmetology
  - Government & Public Administration
  - Child and Family Services
  - Law Enforcement
  - Firefighter
  - JROTC

- [Adv Plant & Soil Science](#) 1 credit(s)
- [Advance Practicum Culinary](#)
- [Art](#) 2 credit(s)
- [Advance via Individual Deter](#) 1 credit(s)

On the Endorsement Electives category, you first have to use the drop-down to select your pathway.

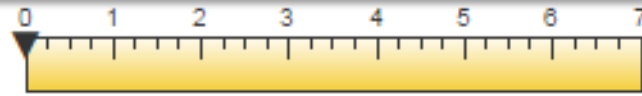




# Then you'll see a set of electives specific to your endorsement!

## Endorsement Electives

First, select an endorsement pathway, paying attention to requirements listed. Then, you may choose additional electives totaling at least 7.



CREDITS

IN YOUR PLAN (0)  STILL NEEDED (7)

Please choose 7.00 credits from any mix of courses available in the sub-groups menu below.

Endorsement Electives sub-groups	Filter List by:	Subject Area	Grade Level
<input type="checkbox"/> <a href="#">Child Development</a>		A	All
<input type="checkbox"/> <a href="#">Counseling and Mental Health</a>			
<input type="checkbox"/> <a href="#">Family &amp; Community Services</a>			
<input type="checkbox"/> <a href="#">Future Soc Per Public Service</a>			
<input type="checkbox"/> <a href="#">Human Growth &amp; Development</a>			
<input type="checkbox"/> <a href="#">Practicum in Human Services</a>			

CHOOSE COURSES TO MEET THE REQUIREMENTS

CLICK HERE TO ADD THEM TO YOUR PLAN!

Add selected courses to your draft plan





Recommended High School Plan (click to rename)

Crowley H S

**REQUIREMENTS**

Recommended High School Plan

- English ✓
- Mathematics ✓

**COURSES**

Please select courses under the Plan of Study on the left to see the courses available.

**YOUR DRAFT PLAN**

- Grade 9
- Algebra 1 ✕





Looks great! I think you're really going to go places!



- 1. choose a plan
- 2. modify courses
- 3. review & finalize
- 4. scan your plan!

[course planner home](#)
[notes and comments](#)
[view course history](#)
[switch to another plan](#)
[exit course planner](#)

[VIEW BY REQUIREMENTS](#)
[VIEW BY GRADE LEVEL](#)
[VIEW PLAN ACTIVITY](#)

## Recommended High School Plan Draft Plan

Crowley H S

scan it

print it

### Your plan at a glance

Min. required: 26.00 credit(s)    
 In your plan: 17 credit(s)    
 You still need: 0 credit(s)    
 Completed: 0 credit(s)

English 4.00 total credits

GRADE	COURSE	CREDITS PLANNED	CREDITS EARNED
9	English	1	0
10	English	1	0



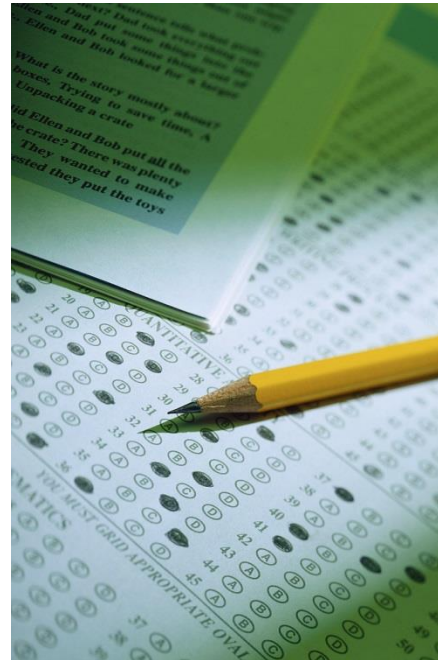
USE THESE TABS TO VIEW YOUR COURSE PLAN AND MAKE SURE IT IS JUST THE WAY YOU WANT IT!

ONCE YOU'RE DONE, YOU CAN EXIT THE COURSE PLANNER! (scan your plan is not working yet)



# DON'T FORGET YOU WILL ALSO HAVE TO PASS 5 END OF COURSE EXAMS IN ORDER TO RECEIVE A TEXAS HIGH SCHOOL DIPLOMA

- ❑ English 1
- ❑ English 2
- ❑ Algebra 1
- ❑ Biology
- ❑ US History



# FREQUENTLY ASKED QUESTIONS

- **Can I choose more than one endorsement? – YES!**
- **What if I do not complete the endorsement? –** *After your 10<sup>th</sup> grade year, you and your parent, along with your counselor can discuss dropping to the foundation plan. But, this will limit your post-secondary options.*
- **So, every student must take two years of foreign language? – Yes.** *This is consistent with what colleges are expecting of our students.*
- **Does every student have to take Algebra 2? – In order to graduate on the Distinguished Achievement Plan, and to be offered AUTOMATIC admission (if you also rank in the top 10% of the graduating class) to a four-year state university within Texas, a student must successfully complete Algebra 2. (Top 7% for UT Austin)**



# WHAT IF I HAVE QUESTIONS?

- Your 9<sup>th</sup> grade Counselor can help.
  - CHS-9<sup>th</sup>:
    - Debbie Lemke ([debbie.mcdonald@crowley.k12.tx.us](mailto:debbie.mcdonald@crowley.k12.tx.us))
  - NC-9<sup>th</sup>:
    - Rhonda Smith ([rhonda.smith@crowley.k12.tx.us](mailto:rhonda.smith@crowley.k12.tx.us))
    - Zarinah Scott ([zarinah.scott@crowley.k12.tx.us](mailto:zarinah.scott@crowley.k12.tx.us))
- Your College and Career Readiness Counselors can help.
  - Amy Kuhns ([amy.kuhns@crowley.k12.tx.us](mailto:amy.kuhns@crowley.k12.tx.us))
  - Mike Mabry ([michael.mabry@crowley.k12.tx.us](mailto:michael.mabry@crowley.k12.tx.us))



# ONLINE COURSE SELECTION

- Online course selection will be open to students starting November 30<sup>th</sup> , 2015– January 15, 2016! Be sure to message or meet with your counselor if you have questions about your course selections for the 2016-2017 school year. You may also contact Mrs. Kuhns or Mr. Mabry at the BRJ CTE Center. Here is a quote to get you on your way to good course planning for your success in high school and beyond:
- “Planning is bringing the future into the present so that you can do something about it now.”- Alan Lakein

